

Cooper Lighting Solutions Photometric Lab
1121 Highway 74 South
Peachtree City, GA 30269



Scaled data based on original data using
LM-79-2019 Approved Method: Electrical and Photometric Measurements of Solid-
State Lighting Products

Test Report Prepared for
Cooper Lighting Solutions

Brand: METALUX

Report Number: P976846

Luminaire Tested: 24SR-LD2-C-59-UNV-L935-CD1-PG-U

Issue Date: 03/18/2025

Test Information

Test Method: LM-79-2019
Report Number: P976846
Test Lab: INNOVATION CENTER(P3)
Issue Date: 03/18/2025
Manufacturer: COOPER LIGHTING SOLUTIONS
Product Line: METALUX
Catalog Number: 24SR-LD2-C-59-UNV-L935-CD1-PG-U
Description: METALUX SKYRIDGE 2x4 5900LM PACKAGE 90CRI 3500K TROFFER with Primary Green SKYTRII
Light Source: 3500K CCT, 90+ CRI LEDS
Ballast/Driver: -

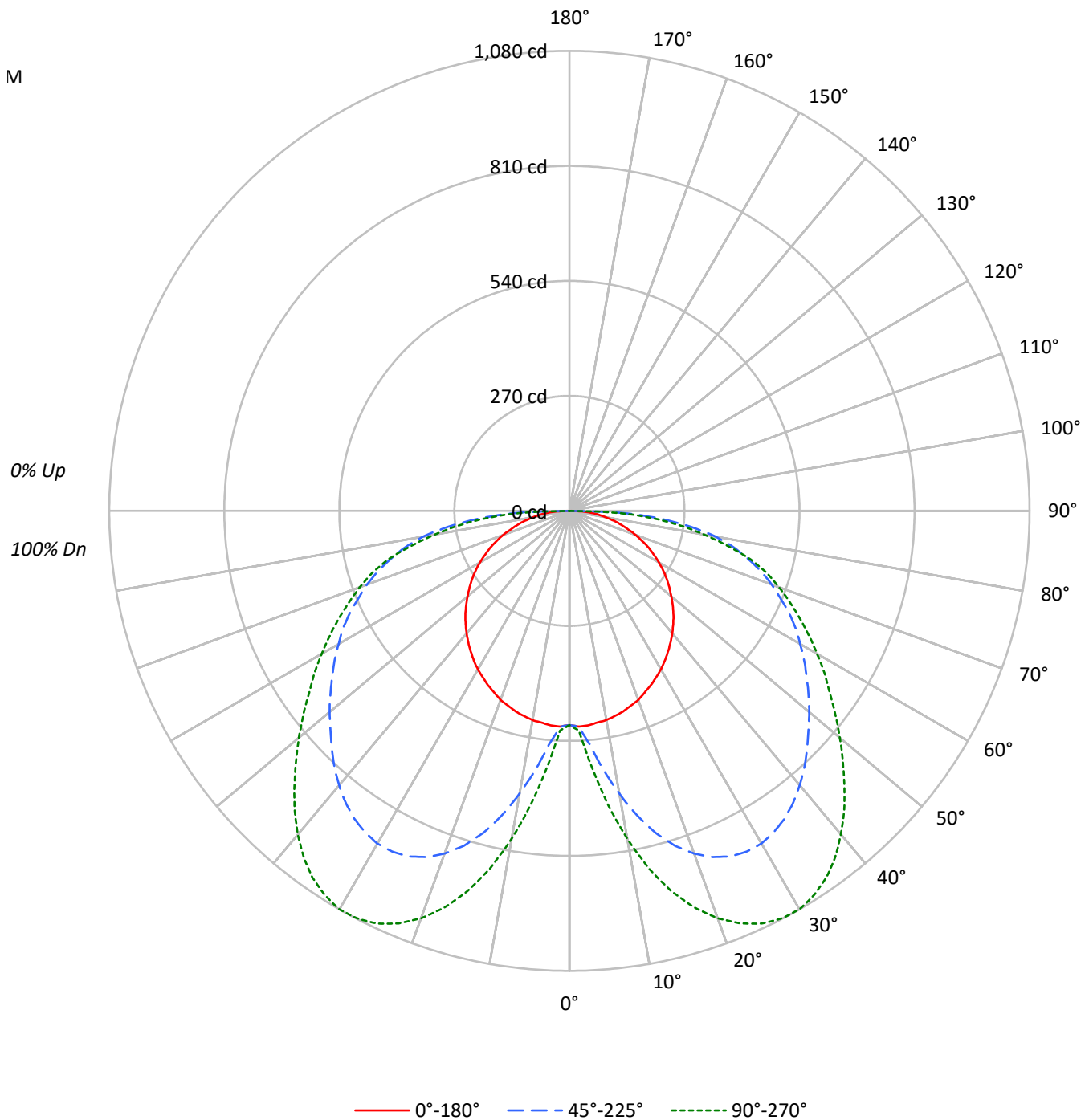
Summary

Lumens per Lamp: N/A
Luminaire Lumens: 3351.0 lumens
Efficiency: N/A
Efficacy: 76.5 lumens/watt
Spacing Criteria (0/90/45): 1.27 / 2.25 / 2.05
Luminous Opening: Rectangular (W 2' x L: 4' x H: 0')
CIE Type: Direct

Input Watts (W): 43.8
Input Voltage (V): 120
Input Current (A_{in}): NR
Voltage Rise (V): NR
Power Factor: NR
Total Harmonic Distortion (THDi): NR
Frequency (hertz): 60
Stabilization Time: NR
Operation Time: NR
Ambient Temperature (°C): NR
Test Distance: 28.75 FT

TEST NUMBER: P976846
CATALOG NUMBER: 24SR-LD2-C-59-UNV-L935-CD1-PG-U

Luminous Intensity Polar Plot





TEST NUMBER: P976846

CATALOG NUMBER: 24SR-LD2-C-59-UNV-L935-CD1-PG-U

COEFFICIENT OF UTILIZATION - ZONAL CAVITY METHOD:

RF	20				20				20				20				20				
RC	80				70				50				30				10			0	
RW	70	50	30	10	70	50	30	10	50	30	10	50	30	10	50	30	10	50	30	10	0
RCR																					
0	119	119	119	119	116	116	116	116	111	111	111	106	106	106	102	102	102	102	102	102	100
1	106	100	95	90	103	98	93	88	93	89	86	89	86	83	86	83	80	86	83	80	78
2	95	85	77	70	92	83	76	69	80	73	68	76	71	66	73	69	65	73	69	65	62
3	86	73	64	57	83	72	63	56	69	61	55	66	59	54	63	58	53	63	58	53	51
4	78	64	54	47	75	63	54	46	60	52	46	58	51	45	55	49	44	55	49	44	42
5	71	57	47	39	69	56	46	39	53	45	39	51	44	38	49	43	38	49	43	38	35
6	65	51	41	34	63	50	40	34	48	39	33	46	39	33	44	38	33	44	38	33	30
7	60	46	36	29	58	45	36	29	43	35	29	42	34	29	40	33	28	40	33	28	26
8	56	41	32	26	54	41	32	26	39	31	25	38	31	25	37	30	25	37	30	25	23
9	52	38	29	23	50	37	29	23	36	28	23	35	28	23	34	27	22	34	27	22	20
10	49	34	26	20	47	34	26	20	33	25	20	32	25	20	31	25	20	31	25	20	18

AVERAGE LUMINANCE (cd/sqm):

	0°	45°	90°
0°	676	676	676
5°	683	744	815
10°	681	921	1068
15°	679	1091	1287
20°	676	1226	1457
25°	670	1329	1587
30°	667	1401	1678
35°	662	1447	1726
40°	660	1477	1741
45°	657	1501	1737
50°	653	1538	1735
55°	654	1594	1749
60°	654	1683	1806
65°	655	1812	1899
70°	652	1989	2059
75°	653	2254	2290
80°	674	2707	2493
85°	789	3369	3027

MAXIMUM LUMINANCE 45°-90°:

Horizontal Angle: 45°
 Vertical Angle: 87.5°
 Luminance: 4173 cd/sqm



TEST NUMBER: P976846
 CATALOG NUMBER: 24SR-LD2-C-59-UNV-L935-CD1-PG-U

ZONAL LUMENS:

Zone	Lumens	% Fixture
0°-10°	56.0	1.7
10°-20°	211.5	6.3
20°-30°	384.9	11.5
30°-40°	510.5	15.2
40°-50°	559.3	16.7
50°-60°	549.7	16.4
60°-70°	498.7	14.9
70°-80°	395.2	11.8
80°-90°	185.2	5.5
90°-100°	0.0	0.0
100°-110°	0.0	0.0
110°-120°	0.0	0.0
120°-130°	0.0	0.0
130°-140°	0.0	0.0
140°-150°	0.0	0.0
150°-160°	0.0	0.0
160°-170°	0.0	0.0
170°-180°	0.0	0.0
0°-30°	652.3	19.5
0°-40°	1162.9	34.7
0°-60°	2271.9	67.8
0°-90°	3351.0	100.0
90°-120°	0.0	0.0
90°-150°	0.0	0.0
90°-180°	0.0	0.0
0°-180°	3351.0	100.0

CANDELA DISTRIBUTION:

	0°	22.5°	45°	67.5°	90°	Flux
0°	503	503	503	503	503	
5°	506	509	551	590	604	48
15°	488	606	783	889	924	137
25°	452	668	895	1022	1069	208
35°	403	653	881	1006	1051	253
45°	345	587	789	884	913	266
55°	279	515	680	733	746	249
65°	206	445	569	586	597	203
75°	126	344	434	434	440	133
85°	51	185	218	196	196	52
90°	0	0	0	0	0	



TEST NUMBER: P976846

CATALOG NUMBER: 24SR-LD2-C-59-UNV-L935-CD1-PG-U

CANDELA DISTRIBUTION (FULL):

	0°	5°	10°	15°	20°	25°	30°	35°	40°	45°	50°
0°	502.7	502.7	502.7	502.7	502.7	502.7	502.7	502.7	502.7	502.7	502.7
2.5°	506.8	505.5	505.5	505.5	504.0	504.0	504.0	505.5	505.5	506.8	509.6
5°	505.5	504.0	504.0	504.0	506.8	510.9	519.3	528.9	540.1	551.1	563.5
7.5°	501.3	501.3	501.3	505.5	518.0	534.5	555.2	576.0	593.8	613.1	631.2
10°	498.7	498.7	501.3	515.2	540.1	567.6	595.3	622.8	647.7	673.9	698.8
12.5°	493.1	493.1	501.3	527.6	562.0	598.1	632.5	667.0	700.3	731.9	759.6
15°	487.5	487.5	505.5	542.7	584.1	627.1	668.5	708.5	747.1	783.0	814.8
17.5°	479.3	480.6	508.3	553.9	603.5	651.8	697.5	743.1	784.5	824.5	857.7
20°	472.3	475.1	510.9	563.5	618.7	672.6	723.7	770.7	814.8	856.2	892.1
22.5°	461.3	466.9	512.4	570.4	629.9	687.9	740.3	790.1	836.9	879.8	915.7
25°	451.6	458.5	510.9	573.2	638.0	697.5	751.2	802.3	850.7	894.9	932.3
27.5°	440.5	451.6	509.6	574.5	640.8	701.6	756.8	809.4	857.7	901.8	940.6
30°	429.5	443.3	505.5	573.2	639.5	700.3	755.5	809.4	857.7	901.8	939.1
32.5°	417.1	432.3	497.2	566.3	634.0	693.2	748.6	801.0	850.7	893.6	930.8
35°	403.3	421.2	487.5	556.6	622.8	682.3	736.2	788.6	836.9	881.1	917.0
37.5°	389.6	410.2	476.5	545.5	610.5	668.5	720.9	773.4	820.4	863.1	897.7
40°	375.6	397.7	464.1	531.7	595.3	651.8	704.4	755.5	799.7	841.0	872.8
42.5°	360.4	385.3	450.3	516.5	577.3	632.5	685.1	734.7	777.6	816.3	846.6
45°	345.3	370.2	435.1	500.0	560.7	613.1	664.3	712.6	752.7	788.6	817.6
47.5°	328.8	356.3	421.2	483.4	541.4	595.3	644.9	689.2	729.3	760.9	788.6
50°	312.1	341.0	404.6	466.9	523.4	576.0	624.3	667.0	704.4	734.7	758.3
52.5°	295.5	326.0	389.6	450.3	506.8	557.9	605.0	644.9	679.5	707.2	730.6
55°	279.0	310.8	374.3	433.6	490.3	540.1	585.6	622.8	656.1	679.5	698.8
57.5°	260.9	295.5	359.1	418.5	473.7	523.4	566.3	602.2	632.5	653.3	669.8
60°	243.1	279.0	342.5	403.3	457.2	505.5	547.0	581.4	607.8	625.6	640.8
62.5°	223.8	262.4	327.3	386.8	440.5	487.5	526.2	556.6	582.8	599.4	607.8
65°	205.7	245.9	310.8	370.2	422.6	466.9	504.0	533.0	555.2	569.1	576.0
67.5°	185.1	227.9	292.7	352.2	401.8	444.8	479.3	506.8	526.2	535.8	541.4
70°	165.8	210.0	273.4	331.4	378.4	419.9	452.9	479.3	495.9	505.5	506.8
72.5°	145.0	190.5	254.1	309.5	355.0	393.6	425.4	448.8	462.6	471.0	472.3
75°	125.6	169.9	230.6	283.1	326.0	361.9	392.2	414.3	428.2	433.6	433.6
77.5°	106.3	147.8	205.7	255.6	295.5	328.8	356.3	378.4	389.6	394.9	394.9
80°	87.0	127.1	179.5	225.1	260.9	291.4	319.1	338.4	349.4	349.4	341.0
82.5°	69.1	103.5	149.2	190.5	221.0	248.7	274.9	287.3	290.1	287.3	280.3
85°	51.1	78.8	116.0	147.8	175.4	194.8	211.3	219.7	221.0	218.2	212.6
87.5°	29.0	45.5	66.4	87.0	105.0	114.7	128.4	131.2	131.2	135.3	128.4
90°	0.0	0.0	0.0	0.0	0.0	0.0	0.0	0.0	0.0	0.0	0.0



TEST NUMBER: P976846

CATALOG NUMBER: 24SR-LD2-C-59-UNV-L935-CD1-PG-U

CANDELA DISTRIBUTION (continued):

	55°	60°	65°	70°	75°	80°	85°	90°
0°	502.7	502.7	502.7	502.7	502.7	502.7	502.7	502.7
2.5°	510.9	512.4	512.4	516.5	516.5	518.0	516.5	516.5
5°	571.7	577.3	585.6	593.8	596.6	602.2	600.7	603.5
7.5°	644.9	656.1	668.5	679.5	685.1	690.6	691.9	696.0
10°	718.2	731.9	747.1	762.4	770.7	774.8	780.4	781.7
12.5°	781.7	802.3	817.6	834.1	845.3	850.7	856.2	859.0
15°	839.7	860.5	879.8	897.7	908.8	917.0	922.6	923.9
17.5°	883.9	907.4	928.2	947.5	958.5	968.1	973.7	976.5
20°	918.5	944.7	965.3	984.7	997.1	1008.3	1016.5	1017.9
22.5°	943.2	969.6	993.0	1012.4	1027.6	1038.6	1045.4	1048.2
25°	961.3	988.9	1012.4	1031.7	1046.9	1059.4	1066.3	1069.0
27.5°	969.6	998.6	1023.3	1041.4	1056.6	1069.0	1077.2	1078.7
30°	970.9	998.6	1023.3	1042.7	1057.9	1070.3	1077.2	1080.0
32.5°	961.3	990.2	1015.2	1033.0	1048.2	1060.7	1067.6	1069.0
35°	947.5	973.7	997.1	1015.2	1030.4	1041.4	1048.2	1051.0
37.5°	926.7	951.6	973.7	990.2	1004.0	1015.2	1022.0	1024.8
40°	901.8	925.4	946.0	961.3	973.7	983.4	988.9	991.5
42.5°	872.8	894.9	914.2	926.7	939.1	947.5	951.6	954.4
45°	842.5	863.1	878.4	889.5	900.5	907.4	911.4	912.9
47.5°	810.7	828.7	841.0	850.7	859.0	865.9	870.2	870.2
50°	778.9	794.2	803.8	813.5	820.4	824.5	827.2	828.7
52.5°	747.1	759.6	766.5	774.8	780.4	784.5	787.3	787.3
55°	714.1	723.7	729.3	736.2	741.6	744.4	747.1	745.8
57.5°	682.3	689.2	693.2	698.8	702.9	705.7	708.5	710.0
60°	649.2	654.6	656.1	661.5	665.7	668.5	669.8	671.1
62.5°	614.6	618.7	621.5	624.3	628.4	631.2	632.5	634.0
65°	580.1	582.8	582.8	588.4	592.5	593.8	595.3	596.6
67.5°	544.2	545.5	547.0	551.1	555.2	556.6	559.4	559.4
70°	508.3	508.3	509.6	513.7	518.0	519.3	522.1	523.4
72.5°	471.0	472.3	472.3	476.5	480.6	483.4	484.7	486.2
75°	432.3	432.3	433.6	435.1	436.4	437.9	437.9	440.5
77.5°	390.9	385.3	382.5	379.9	381.2	381.2	379.9	381.2
80°	332.9	326.0	321.7	320.4	321.7	320.4	320.4	321.7
82.5°	273.4	265.2	262.4	260.9	260.9	260.9	259.6	262.4
85°	205.7	200.2	197.6	194.8	196.1	196.1	194.8	196.1
87.5°	124.3	121.6	118.8	116.0	117.5	116.0	114.7	118.8
90°	0.0	0.0	0.0	0.0	0.0	0.0	0.0	0.0



TEST NUMBER: P976846

CATALOG NUMBER: 24SR-LD2-C-59-UNV-L935-CD1-PG-U

CIE UGR TABLE:

Reflectances:											
Ceiling		0.7	0.7	0.5	0.5	0.3	0.7	0.7	0.5	0.5	0.3
Wall		0.5	0.3	0.5	0.3	0.3	0.5	0.3	0.5	0.3	0.3
Reference plane		0.2	0.2	0.2	0.2	0.2	0.2	0.2	0.2	0.2	0.2
Room Dimensions		Viewed crosswise					Viewed endwise				
X=2H	Y=2H	11.8	13.6	12.2	13.9	14.2	14.8	16.5	15.1	16.9	17.2
	3H	13.8	15.4	14.2	15.7	16.1	17.3	18.9	17.7	19.3	19.6
	4H	14.6	16.1	14.9	16.5	16.8	18.5	20.1	18.9	20.4	20.8
	6H	15.1	16.6	15.6	17.0	17.3	19.6	21.0	20.0	21.4	21.8
	8H	15.4	16.8	15.8	17.1	17.5	20.0	21.4	20.4	21.8	22.2
	12H	15.5	16.9	16.0	17.3	17.7	20.4	21.8	20.8	22.1	22.6
4H	2H	13.5	15.1	13.9	15.4	15.8	15.5	17.1	15.9	17.4	17.8
	3H	16.0	17.4	16.4	17.8	18.2	18.3	19.7	18.7	20.1	20.5
	4H	17.1	18.3	17.6	18.8	19.2	19.7	20.9	20.1	21.3	21.8
	6H	18.0	19.1	18.5	19.5	20.0	21.0	22.0	21.4	22.5	22.9
	8H	18.4	19.4	18.8	19.8	20.3	21.5	22.5	21.9	22.9	23.4
	12H	18.6	19.5	19.1	20.0	20.5	22.0	22.9	22.5	23.4	23.8
8H	4H	18.3	19.3	18.7	19.7	20.2	20.3	21.3	20.7	21.7	22.2
	6H	19.6	20.5	20.1	21.0	21.4	21.7	22.6	22.2	23.1	23.5
	8H	20.2	21.0	20.7	21.5	22.0	22.4	23.2	22.9	23.7	24.1
	12H	20.7	21.4	21.2	21.9	22.4	23.0	23.7	23.5	24.2	24.8
12H	4H	18.5	19.4	19.0	19.9	20.4	20.4	21.3	20.8	21.8	22.2
	6H	20.0	20.8	20.5	21.3	21.8	21.9	22.7	22.4	23.2	23.7
	8H	20.8	21.5	21.3	21.9	22.5	22.7	23.4	23.2	23.8	24.4

LM-79-2019: Approved Method: Electrical and Photometric Measurements of Solid-
State Lighting Products

Report Prepared for

Cooper Lighting Solutions

Metalux

Report Number: SP1-2506-457-6

Test Date: 07/01/2025

Luminaire Tested: 24SR-LD2-64-C-UNV-L935-CD1-U

Data in this report applies to families of products including 24SR-LD2-64-C-UNV-L935-CD1-U

Test Information

Test Method: LM-79-2019
 Report Number: SP1-2506-457-6
 Test Lab: COOPER LIGHTING SOLUTIONS
 Photometer: SP1 - 76IN SPHERE
 Measurement Geometry: 4π
 Issue Date: 07/02/2025
 Manufacturer: COOPER LIGHTING SOLUTIONS
 Product Line: Metalux
 Catalog Number: **24SR-LD2-64-C-UNV-L935-CD1-U**
 Description: 2X4 SKYRIDGE 6400LM Fixture with new LTN chip

Spectral Parameters

CCT (K): 3329
 CIE u': 0.2411
 CIE v': 0.5118
 Duv: -0.0021
 CIE x: 0.4128
 CIE y: 0.3894
 CIE z: 0.1979
 Peak Wavelength (nm): 630
 Dominant Wavelength (nm): 582
 Purity: 40.74075
 R_f: 91.4
 R_g: 100.2

CRI (Ra): 93.9
 R1: 95.4
 R2: 97.4
 R3: 97.7
 R4: 94.9
 R5: 95.1
 R6: 95.7
 R7: 91.7
 R8: 83.2
 R9: 60.5
 R10: 92.5
 R11: 95.9
 R12: 82.0
 R13: 96.0
 R14: 98.0
 R15: 91.5



Test Conditions

Stabilization Time: 48M
 Operation Time: 1H 48M
 Sphere Temperature (°C): 24.0

REPORT NUMBER: SP1-2506-457-6

Measurement and Test Equipment			
Instrument	Identification Number	Calibration Date	Calibration Due Date
Photometer	76INCH SPHERE IN0058	6/16/2025	12/16/2025
Power Meter	XITRON INXT2011004	1/21/2025	1/21/2026
AC Power Source	CHROMA 61603 IN0063	10/22/2024	10/22/2025
DC Power Source	AGILENT E3634A IN0208	10/22/2024	10/22/2025
Sphere Thermometer	ONSET IN0085	10/22/2024	10/22/2025
Room Thermometer	ONSET IN0046	10/22/2024	10/22/2025

REPORT NUMBER: SP1-2506-457-6

CIE 1931 Chromaticity Diagram



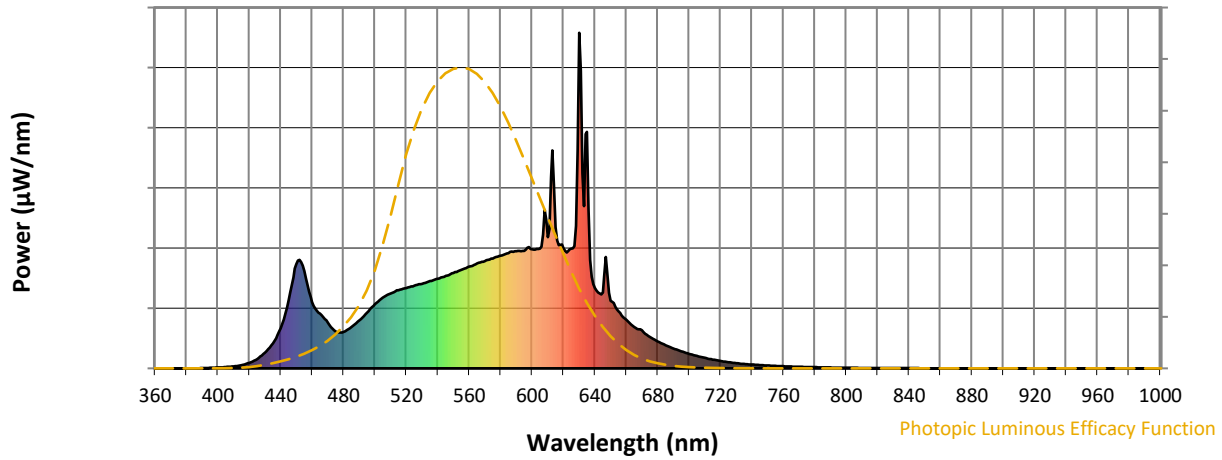
CIE 1931 Chromaticity Diagram with 2017 ANSI 7-Step and 4-Step Quadrangles



Point lies inside the ANSI 3500K 7-step quadrangle

REPORT NUMBER: SP1-2506-457-6

Photopic Flux vs. Wavelength



Photopic Lumens: NR

λ (nm)	Power W [^] /nm	Lumens (ϕ /nm)	λ (nm)	Power W [^] /nm	Lumens (ϕ /nm)	λ (nm)	Power W [^] /nm	Lumens (ϕ /nm)	λ (nm)	Power W [^] /nm	Lumens (ϕ /nm)	λ (nm)	Power W [^] /nm	Lumens (ϕ /nm)
360	0	NR	490	143	NR	620	358	NR	750	9	NR	880	0	NR
365	0	NR	495	166	NR	625	357	NR	755	7	NR	885	0	NR
370	0	NR	500	191	NR	630	1000	NR	760	6	NR	890	0	NR
375	0	NR	505	210	NR	635	705	NR	765	5	NR	895	0	NR
380	0	NR	510	223	NR	640	239	NR	770	5	NR	900	0	NR
385	0	NR	515	233	NR	645	226	NR	775	4	NR	905	0	NR
390	1	NR	520	240	NR	650	201	NR	780	3	NR	910	0	NR
395	2	NR	525	246	NR	655	170	NR	785	3	NR	915	0	NR
400	3	NR	530	251	NR	660	145	NR	790	2	NR	920	0	NR
405	4	NR	535	260	NR	665	123	NR	795	2	NR	925	0	NR
410	6	NR	540	267	NR	670	113	NR	800	2	NR	930	0	NR
415	9	NR	545	276	NR	675	93	NR	805	2	NR	935	0	NR
420	16	NR	550	284	NR	680	80	NR	810	1	NR	940	0	NR
425	28	NR	555	294	NR	685	69	NR	815	1	NR	945	0	NR
430	46	NR	560	303	NR	690	59	NR	820	1	NR	950	0	NR
435	75	NR	565	313	NR	695	51	NR	825	1	NR	955	0	NR
440	120	NR	570	319	NR	700	43	NR	830	1	NR	960	0	NR
445	203	NR	575	327	NR	705	37	NR	835	1	NR	965	0	NR
450	311	NR	580	336	NR	710	31	NR	840	1	NR	970	0	NR
455	290	NR	585	344	NR	715	26	NR	845	1	NR	975	0	NR
460	197	NR	590	349	NR	720	22	NR	850	0	NR	980	0	NR
465	163	NR	595	350	NR	725	18	NR	855	0	NR	985	0	NR
470	135	NR	600	355	NR	730	15	NR	860	0	NR	990	0	NR
475	110	NR	605	357	NR	735	13	NR	865	0	NR	995	0	NR
480	108	NR	610	391	NR	740	11	NR	870	0	NR	1000	0	NR
485	123	NR	615	421	NR	745	10	NR	875	0	NR			

REPORT NUMBER: SP1-2506-457-6

Scotopic Flux vs. Wavelength



Scotopic Lumens: NR

S/P: 1.57

λ (nm)	Power W [^] /nm	Lumens (ϕ /nm)	λ (nm)	Power W [^] /nm	Lumens (ϕ /nm)	λ (nm)	Power W [^] /nm	Lumens (ϕ /nm)	λ (nm)	Power W [^] /nm	Lumens (ϕ /nm)	λ (nm)	Power W [^] /nm	Lumens (ϕ /nm)
360	0	NR	490	143	NR	620	358	NR	750	9	NR	880	0	NR
365	0	NR	495	166	NR	625	357	NR	755	7	NR	885	0	NR
370	0	NR	500	191	NR	630	1000	NR	760	6	NR	890	0	NR
375	0	NR	505	210	NR	635	705	NR	765	5	NR	895	0	NR
380	0	NR	510	223	NR	640	239	NR	770	5	NR	900	0	NR
385	0	NR	515	233	NR	645	226	NR	775	4	NR	905	0	NR
390	1	NR	520	240	NR	650	201	NR	780	3	NR	910	0	NR
395	2	NR	525	246	NR	655	170	NR	785	3	NR	915	0	NR
400	3	NR	530	251	NR	660	145	NR	790	2	NR	920	0	NR
405	4	NR	535	260	NR	665	123	NR	795	2	NR	925	0	NR
410	6	NR	540	267	NR	670	113	NR	800	2	NR	930	0	NR
415	9	NR	545	276	NR	675	93	NR	805	2	NR	935	0	NR
420	16	NR	550	284	NR	680	80	NR	810	1	NR	940	0	NR
425	28	NR	555	294	NR	685	69	NR	815	1	NR	945	0	NR
430	46	NR	560	303	NR	690	59	NR	820	1	NR	950	0	NR
435	75	NR	565	313	NR	695	51	NR	825	1	NR	955	0	NR
440	120	NR	570	319	NR	700	43	NR	830	1	NR	960	0	NR
445	203	NR	575	327	NR	705	37	NR	835	1	NR	965	0	NR
450	311	NR	580	336	NR	710	31	NR	840	1	NR	970	0	NR
455	290	NR	585	344	NR	715	26	NR	845	1	NR	975	0	NR
460	197	NR	590	349	NR	720	22	NR	850	0	NR	980	0	NR
465	163	NR	595	350	NR	725	18	NR	855	0	NR	985	0	NR
470	135	NR	600	355	NR	730	15	NR	860	0	NR	990	0	NR
475	110	NR	605	357	NR	735	13	NR	865	0	NR	995	0	NR
480	108	NR	610	391	NR	740	11	NR	870	0	NR	1000	0	NR
485	123	NR	615	421	NR	745	10	NR	875	0	NR			

REPORT NUMBER: SP1-2506-457-6

Melanopic Flux vs. Wavelength



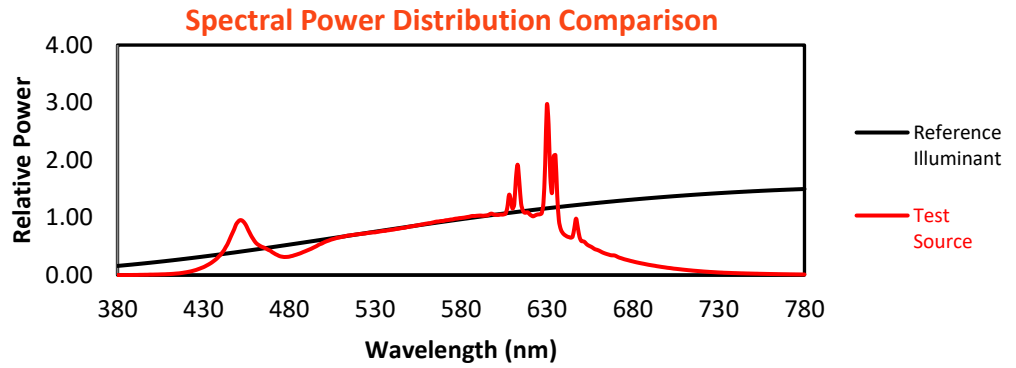
Melanopic Lumens: NR

M/P: 3.17

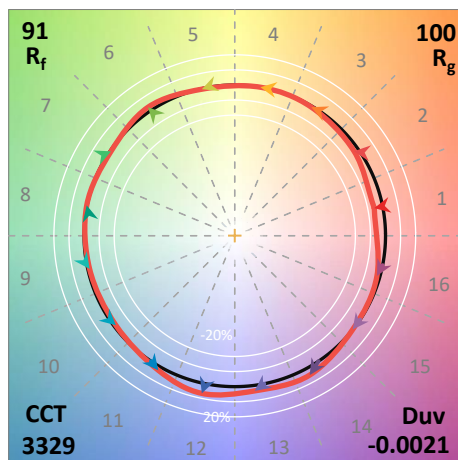
λ (nm)	Power W [^] /nm	Lumens (φ/nm)	λ (nm)	Power W [^] /nm	Lumens (φ/nm)	λ (nm)	Power W [^] /nm	Lumens (φ/nm)	λ (nm)	Power W [^] /nm	Lumens (φ/nm)	λ (nm)	Power W [^] /nm	Lumens (φ/nm)
360	0	NR	490	143	NR	620	358	NR	750	9	NR	880	0	NR
365	0	NR	495	166	NR	625	357	NR	755	7	NR	885	0	NR
370	0	NR	500	191	NR	630	1000	NR	760	6	NR	890	0	NR
375	0	NR	505	210	NR	635	705	NR	765	5	NR	895	0	NR
380	0	NR	510	223	NR	640	239	NR	770	5	NR	900	0	NR
385	0	NR	515	233	NR	645	226	NR	775	4	NR	905	0	NR
390	1	NR	520	240	NR	650	201	NR	780	3	NR	910	0	NR
395	2	NR	525	246	NR	655	170	NR	785	3	NR	915	0	NR
400	3	NR	530	251	NR	660	145	NR	790	2	NR	920	0	NR
405	4	NR	535	260	NR	665	123	NR	795	2	NR	925	0	NR
410	6	NR	540	267	NR	670	113	NR	800	2	NR	930	0	NR
415	9	NR	545	276	NR	675	93	NR	805	2	NR	935	0	NR
420	16	NR	550	284	NR	680	80	NR	810	1	NR	940	0	NR
425	28	NR	555	294	NR	685	69	NR	815	1	NR	945	0	NR
430	46	NR	560	303	NR	690	59	NR	820	1	NR	950	0	NR
435	75	NR	565	313	NR	695	51	NR	825	1	NR	955	0	NR
440	120	NR	570	319	NR	700	43	NR	830	1	NR	960	0	NR
445	203	NR	575	327	NR	705	37	NR	835	1	NR	965	0	NR
450	311	NR	580	336	NR	710	31	NR	840	1	NR	970	0	NR
455	290	NR	585	344	NR	715	26	NR	845	1	NR	975	0	NR
460	197	NR	590	349	NR	720	22	NR	850	0	NR	980	0	NR
465	163	NR	595	350	NR	725	18	NR	855	0	NR	985	0	NR
470	135	NR	600	355	NR	730	15	NR	860	0	NR	990	0	NR
475	110	NR	605	357	NR	735	13	NR	865	0	NR	995	0	NR
480	108	NR	610	391	NR	740	11	NR	870	0	NR	1000	0	NR
485	123	NR	615	421	NR	745	10	NR	875	0	NR			

Summary

$R_f = 91.4$
 $R_g = 100.2$
 $CIE R_a = 93.9$
 $R_9 = 60.5$



Color Vector Graphics

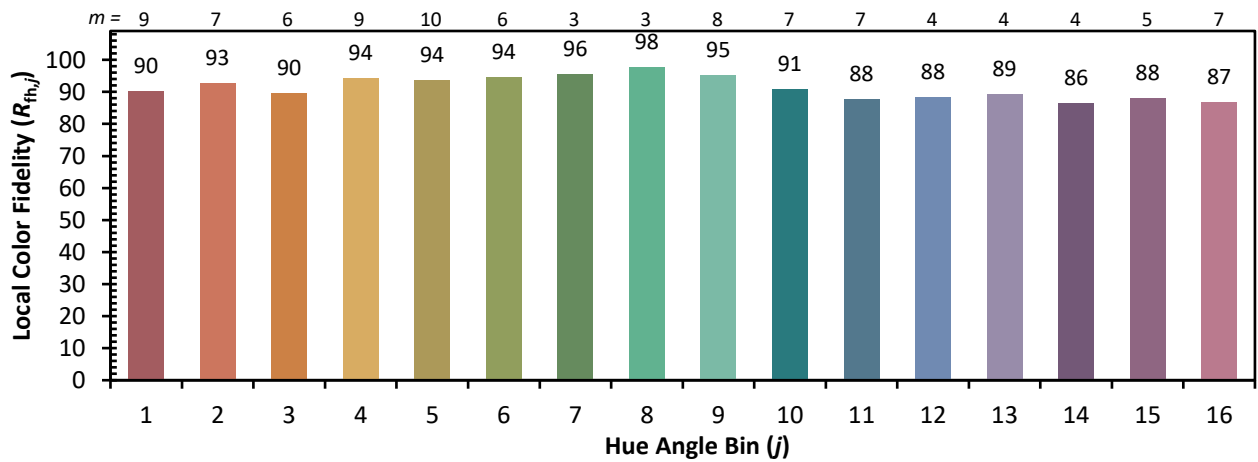
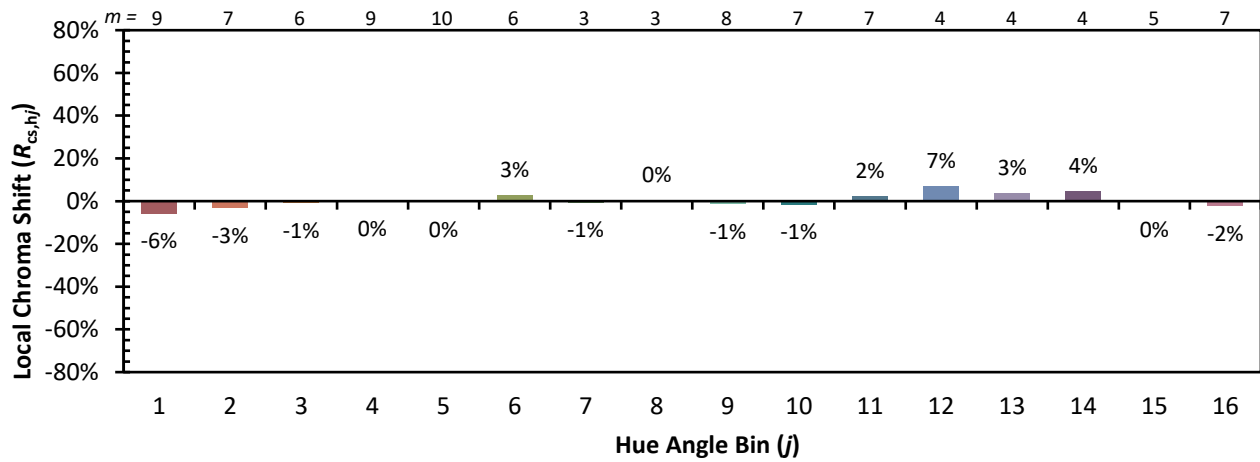


Individual Sample Fidelity Index ($R_{f,i}$)

CES01 = 86	CES26 = 93	CES51 = 98	CES76 = 88
CES02 = 63	CES27 = 93	CES52 = 98	CES77 = 87
CES03 = 31	CES28 = 96	CES53 = 97	CES78 = 85
CES04 = 70	CES29 = 95	CES54 = 95	CES79 = 91
CES05 = 50	CES30 = 96	CES55 = 94	CES80 = 92
CES06 = 51	CES31 = 95	CES56 = 96	CES81 = 75
CES07 = 43	CES32 = 87	CES57 = 95	CES82 = 96
CES08 = 42	CES33 = 97	CES58 = 96	CES83 = 94
CES09 = 29	CES34 = 94	CES59 = 98	CES84 = 95
CES10 = 75	CES35 = 96	CES60 = 94	CES85 = 80
CES11 = 58	CES36 = 84	CES61 = 93	CES86 = 79
CES12 = 64	CES37 = 95	CES62 = 89	CES87 = 91
CES13 = 44	CES38 = 91	CES63 = 94	CES88 = 97
CES14 = 74	CES39 = 99	CES64 = 92	CES89 = 83
CES15 = 72	CES40 = 97	CES65 = 90	CES90 = 98
CES16 = 48	CES41 = 97	CES66 = 90	CES91 = 77
CES17 = 49	CES42 = 93	CES67 = 89	CES92 = 77
CES18 = 56	CES43 = 92	CES68 = 89	CES93 = 86
CES19 = 71	CES44 = 99	CES69 = 91	CES94 = 74
CES20 = 67	CES45 = 96	CES70 = 88	CES95 = 84
CES21 = 86	CES46 = 96	CES71 = 84	CES96 = 92
CES22 = 78	CES47 = 91	CES72 = 94	CES97 = 95
CES23 = 91	CES48 = 94	CES73 = 83	CES98 = 94
CES24 = 90	CES49 = 94	CES74 = 91	CES99 = 92
CES25 = 71	CES50 = 98	CES75 = 86	



Color Rendition by Hue-Angle Bin



Measure Comparisons



(END OF REPORT)